

## SCHEDULE OF PLANT MATERIAL

CODE	BOTANICAL NAME	COMMON NAME	QUANTITY	MATURE HEIGHT	CONTAINER SIZE	STAKES
CS	<i>Callistemon 'Slim'</i>	Slim Bottlebrush	12	3m	200mm	-
CA#	<i>Cupaniopsis anacardioides</i>	Tuckeroo	2	10m	75 litre	2
HS	<i>Hibbertia scandens</i>	Guinea Flower	17	0.4m	140mm	-
WF	<i>Westringia fruticosa</i>	Coastal Rosemary	3	2m	200mm	-

# Trees to comply with NATSPEC Specifying Trees: a guide to assessment of tree quality (2003) or Australian Standard AS 2303 – 2015 Tree stock for landscape use. **All trees to be maintained for the life of the development.** The majority of the plants in this schedule have been selected from Canterbury Council's DCP Part B2.5 and Sydney Water low water use plants.

## MAINTENANCE STRATEGY

To ensure the rapid establishment and long term success of the landscape works the client shall undertake a twelve (12) month maintenance strategy after Practical Completion.

The following general maintenance tasks shall also be undertaken:

- Hand watering of plants on a regular basis equating to four times per week for the first month and two times per week for the next two months. After this period watering dependant on weather conditions & subject to water restrictions.
- Mowing of turf areas every two weeks from October to March and every month from April to September
- Checking of plants, stakes and ties every month
- Spraying of weeds every month
- Replacement of failed plants every three months
- Pruning plants (where applicable) every three months
- Topping up of mulch after six months to maintain a 100mm cover
- Re-application of water crystals around plants after six months
- Analysing soil after six months and applying fertiliser in accordance with the recommendations of the soil analysis

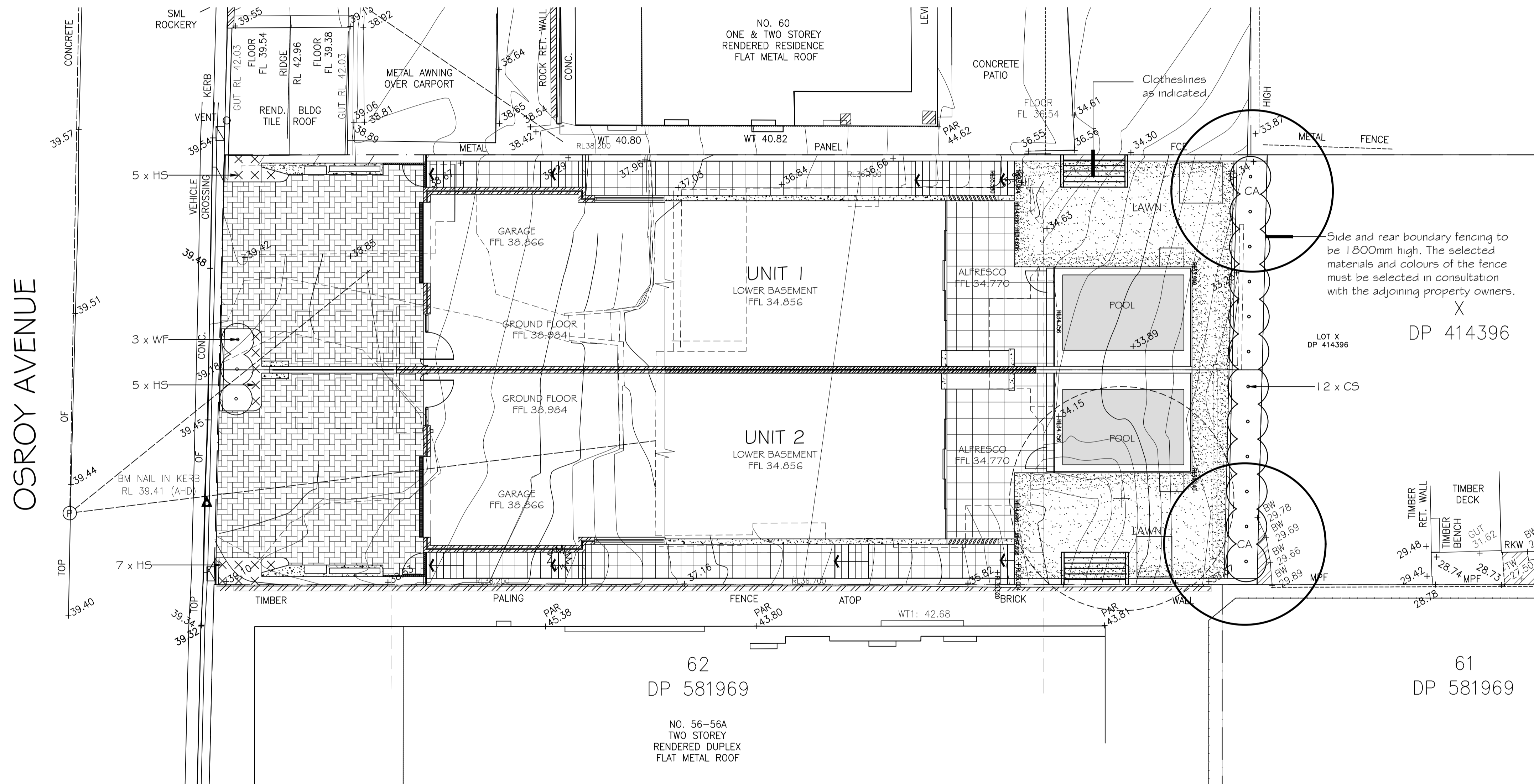
## BASIX CALCULATIONS

UNIT 1 GARDEN AREAS	AREA
Lawn	37.32m <sup>2</sup>
Low Water Use Planting	14.28m <sup>2</sup>
<b>Lawn/LWUP Total</b>	<b>51.60m<sup>2</sup></b>
Permeable pebble mulch	00.00m <sup>2</sup>
<b>Total</b>	<b>51.60m<sup>2</sup></b>

UNIT 2 GARDEN AREAS	AREA
Lawn	35.87m <sup>2</sup>
Low Water Use Planting	14.62m <sup>2</sup>
<b>Lawn/LWUP Total</b>	<b>50.49m<sup>2</sup></b>
Permeable pebble mulch	00.00m <sup>2</sup>
<b>Total</b>	<b>50.49m<sup>2</sup></b>

## LEGEND

- + 55.05 EXISTING LEVELS
- + 65.20 PROPOSED LANDSCAPE LEVELS
- EXISTING TREES TO BE RETAINED
- NEW TURF AREAS: SOFT LEAF BUFFALO
- PEBBLE MULCH
- PAVING TO ARCHITECTS DETAILS
- DRIVEWAY PAVING TO ARCHITECTS DETAILS
- BRICK GARDEN EDGING



## REVISIONS

**A** 03.04.24

1. Major revisions to suit revised architectural plans.

Verify all dimensions on site before commencing construction or ordering materials. Verify the dimensions of all manufactured products before installation. Use figured dimensions in preference to scaled dimensions. Report any discrepancies to the Landscape Architect for a decision before work commences.

## NOTES

This plan is to be read in conjunction with all documentation prepared by **AG Design Projects**.



office. 16/303 pacific highway lindfield nsw 2070

ph 9416 4290  
A.C.N 097 328 580  
email ijla@netspace.net.au

**project**  
Proposed Dual Occupancy  
58 Osroy Avenue, Earlwood  
**drawing**  
Landscape Plan

**client**  
Peter Karam

**date** April 2024  
**scale** 1:100 @ A1  
1:200 @ A3

**job.dwg no.** 147.24(23)/313'A'  
**no. in set** ONE/ONE

**designed by** IJ  
**drawn by** HL

